



# NovoCyte Flow Cytometer

## Technical Seminar

### Polychromatic flow cytometry for human peripheral blood leukocyte subsets

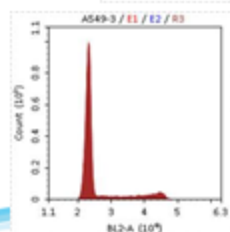
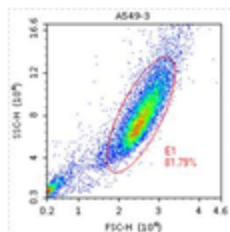
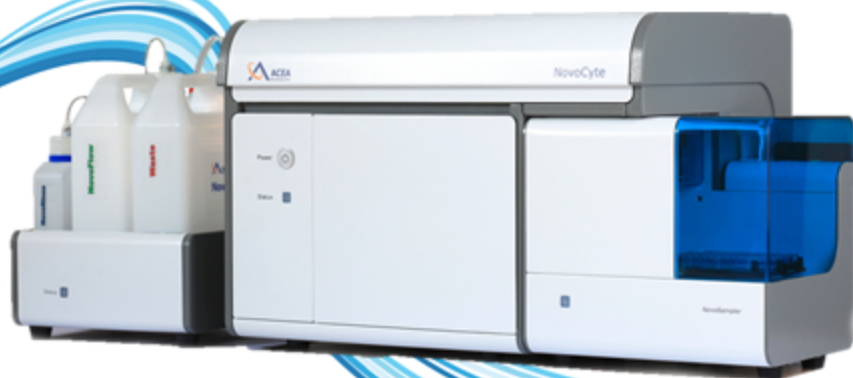
**Stephanie Ting & Fei Chuin Lew, ACEA Biosciences**

23/11/2017 (Thu), 9:30am – 11:00am

Rm A2-08, MTC, 2/F, William M.W. Mong Block, Faculty of Medicine Building

*All are Welcome!*

Keen to design your own polychromatic leukocyte panel but do not know how to? Let us take you through the steps and you will be having fun exercising panel design in no time!



## Demonstration Session

**Come and join our NovoCyte® demo session, you are welcome to bring your own samples.**

**Venue: L5-03, Laboratory Block**

**Session 1: 23/11/2017, 2:30pm**

**Session 2: 24/11/2017, 10:30am**

**Session 3: 24/11/2017, 2:30pm**

**Registration is required**

To register, please go to:

[https://hkuems1.hku.hk/hkuems/ec\\_hdetail.aspx?ueid=53219](https://hkuems1.hku.hk/hkuems/ec_hdetail.aspx?ueid=53219)

#### Yellow Laser Systems

Model Number		3000VYB		
Lasers		405 nm	561 nm	488 nm
Detectors	445/45 nm	•		
	530/30 nm	•		•
	586/20 nm	•	•	•
	615/20 nm	•	•	•
	660/20 nm	•	•	•
	695/40 nm	•	•	•
780/60 nm		•	•	

